

Envision B Series



User Manual

Envision models B01 and B02

Easy Start!

To turn your MegaVoice Envision on, press and hold the [power button](#) on the back of the player until the “Starting Up...” screen is displayed. Once the [Home Screen](#) is displayed the tablet is ready.

To begin use, make sure the currently selected input source is populated with the [correct folder structure and file types](#).

To turn the tablet off, press the power button again for about 2 seconds. The [power-off dialog](#) will appear with a confirmation bar. Swipe to the right to shut Envision down. ¹

¹Envision may also be shut down or restarted from the [Information Screen](#).



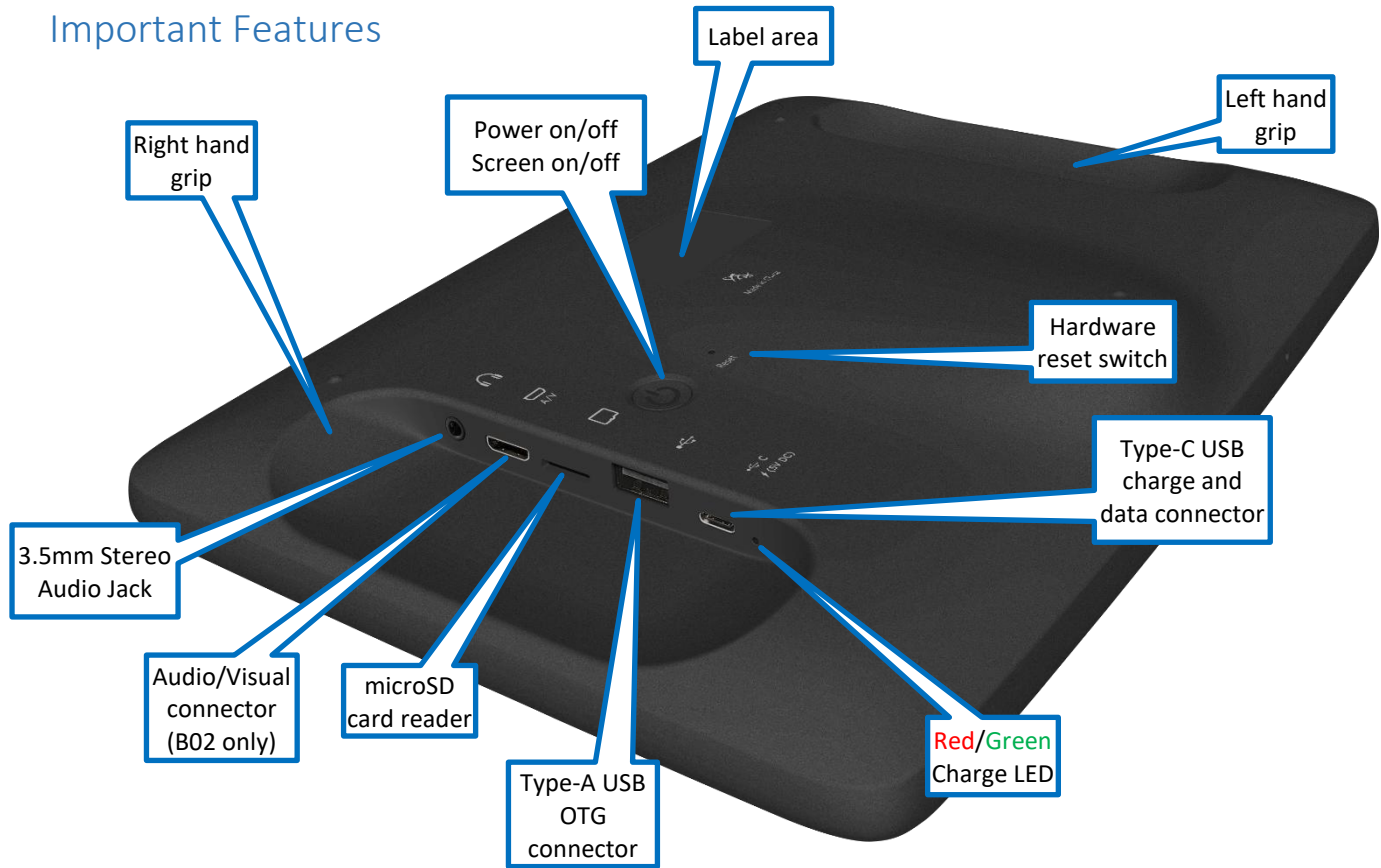
About the Screen

Your Envision includes a 10.1”, 800 x 1280 pixels, IPS touch screen.

- “Tap” works practically everywhere. “Drag” works for all sliders. “Swipe” works in the browser views. ²
- After 1 minute of inactivity, the screen will time out automatically, but the tablet is still on. ³
- If the screen is still untouched for an additional 10 minutes, and playback inactive, Envision turns itself off.
- At any time during operation, a click on the power button will turn the screen off, but the player is still on. A second click restores the screen. ³
- If the screen is turned off during active playback, the player will remain on as long as playback continues.

²See [Trackpad](#) for behavior when [A/V](#) is active. ³Except when output is to an active [A/V](#) device.

Important Features






Audio/Visual (A/V)



Envision model B02 provides an [A/V connector](#) for output to *most* A/V compliant devices (computer monitors, TVs, etc.). Use the 2m A/V cable included, **or your** standard A/V cable with the adaptor (shown at left) to attach an A/V device. ¹

When an A/V device is connected, the A/V icon  will appear at the [top of the screen](#). Tap this icon to open a menu.

The menu choices are as follows:

-  A/V device (audio/video) ²
-  A/V device (audio/video) + TABLET (audio) ³
-  TABLET (audio/video) ⁴

The current setting is always the **highlighted** one. Tapping on any of the 3 options will transfer audio and video output to your selection and close the menu.




¹For devices that provide multiple A/V input connections, make sure it is set to use the correct A/V port.

²Minor cropping of the top edge of the display may occur with some large screen TVs or monitors.


³This option causes audio to be output to both the A/V device (if it has speakers) and to Envision's internal speakers concurrently. If both are working, and the sound is not good, try muting the audio from one or the other.

⁴This option returns full audio/video control to the tablet, terminating the A/V connection.

Trackpad

When Envision is in A/V mode (B02 only), the touch screen becomes a trackpad (or touchpad). A pointer (or cursor)  appears on the A/V device screen. Using the pointer is the method for operating the tablet while in A/V mode.

Placing your finger on the Envision touch screen surface and moving it changes the cursor location in the same manner. Once you lift your finger, movement ceases and the cursor remains in place.

- To select an item or toggle a setting, hover the pointer over it and tap once.
- To “drag” an item (like a slider or browser view list) double-tap it while keeping your finger on the surface and then move in the desired direction. While dragging, the cursor will change format . As long as your finger remains on the tablet surface, “drag” will continue to work.
- If you cannot readily see the pointer because it blends into the background of the current screen, it is possible to force it to the center by tapping 4 times anywhere on the screen within 3 seconds.
- See some screen examples below...



In the example above, the [A/V menu](#) is open while the pointer is just below the volume adjustment icon. The volume icon is tapped once to close the A/V menu, and a second time to select and open the volume slider control.



In the example above, if you double-tap the screen while pointing to the slider, the cursor changes format and enables you to “grab” the slider so that it can be moved to the left or right. Once you remove your finger, the “grab” is released and the cursor changes back to the white pointer. Or you could simply point to the area desired and double-tap. The slider control will jump to that position.

Player Storage

Envision “B” series supports 3 types of accessible storage:

- Internal/fixed
- External/removable microSD
- External/removable Type-A/OTG

The current input device is user selectable from the [Input Device Selection Screen](#) and remains current until changed² or removed² (external storage only) by the user. For device details and specifications, please see [Input Devices](#).

To connect a microSD card, insert it into the [card reader slot](#) with the brass contacts facing away from you (with the label side up as in the illustration). Gently press the card inwards until it locks in place. To remove¹ the card, use your fingernail and gently press it in until the card releases so you can reach it.

¹*When removing a card, take care that it does not spring out when released!*



To connect an OTG device, gently insert it into the [Type-A connector](#) next to the microSD card reader slot. It will only fit in correctly when the side with the 2 openings is facing you (per the illustration).

²*To ensure that bookmarks are saved, please return to the Home Screen before removing either device.*

Player Security/USB Access

The following security settings and USB access are configured for the B01 and B02 models:

- Internal Storage³: Encrypted¹ or Unencrypted files accessible *only* by USB SLS² cable
- External microSD^{3 4}: Encrypted¹ files *only* accessible by USB Data or SLS² cables
- External Type-A/OTG⁵: Encrypted¹ files *only* NOT accessible by USB cable³

¹*MegaVoice offers a free Windows program that provides this encryption for Envision. You may download it here.*
When encrypted files are required and unencrypted are encountered by Envision, they are skipped/ignored.

²*SLS Type-C USB cables are only available from MegaVoice. Contact your sales representative for details.*


³*Due to internal USB limitations, when an SLS or data-only cable is connected and an OTG device is present in the [Type-A connector](#), the connection becomes charge-only. If, however, no OTG device is connected at the time, Envision will switch to computer communication mode and only one of the Internal storage or External microSD card (if present) will be accessible.*

For access to Internal memory, remove any external microSD, restart Envision and use an SLS cable only.

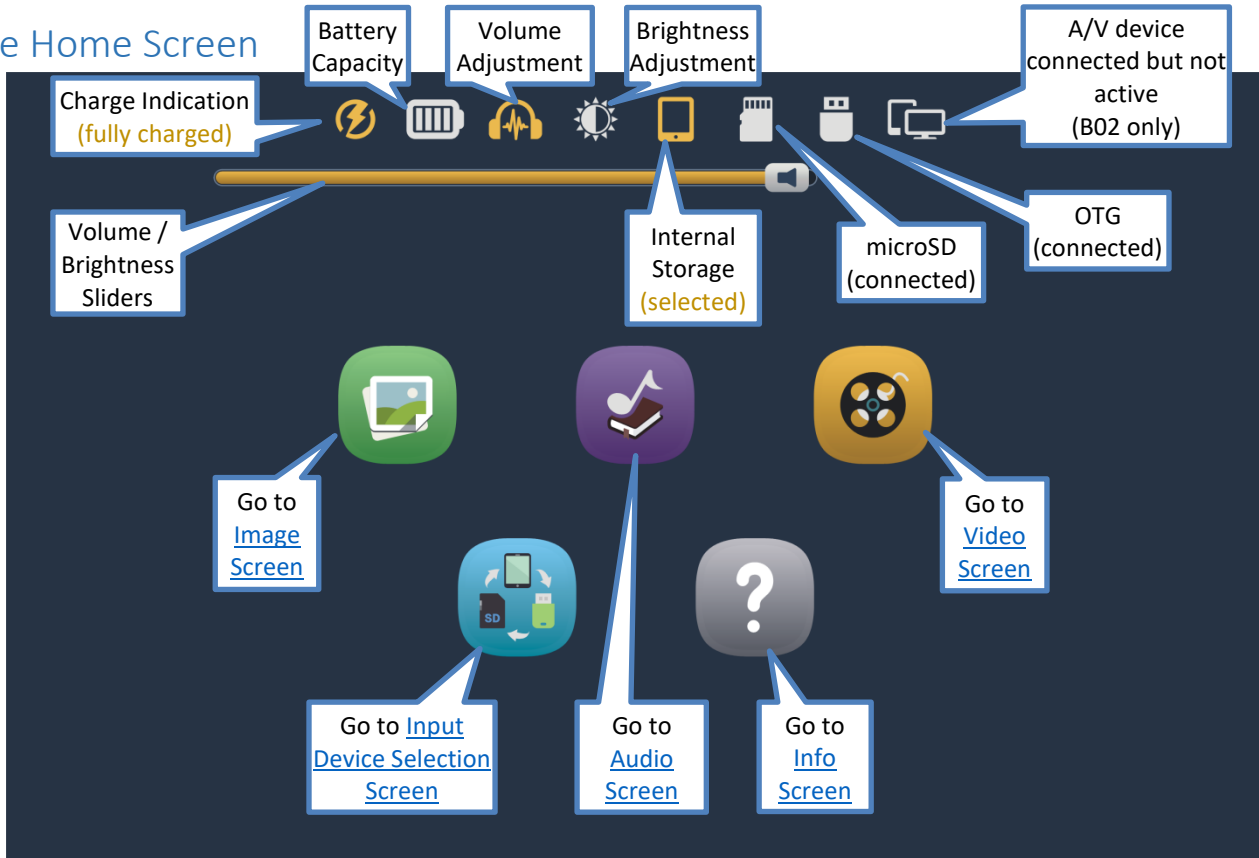
For access to the contents of the OTG device, please connect it directly to a computer or a connected USB hub.

Regardless of the cable type, charging also occurs while connected.

⁴*For access to the External microSD, please make sure it is present in the [microSD card reader](#) **before** connecting the USB cable.*

⁵  *Faulty or low-quality OTG devices may cause Envision to lock up when connecting them.*

The Home Screen



Above: Envision is connected for charging (completed), an external audio device is connected, A/V device is connected (but not active), the volume is being adjusted, external microSD and OTG are connected but Internal Storage is the selected input.

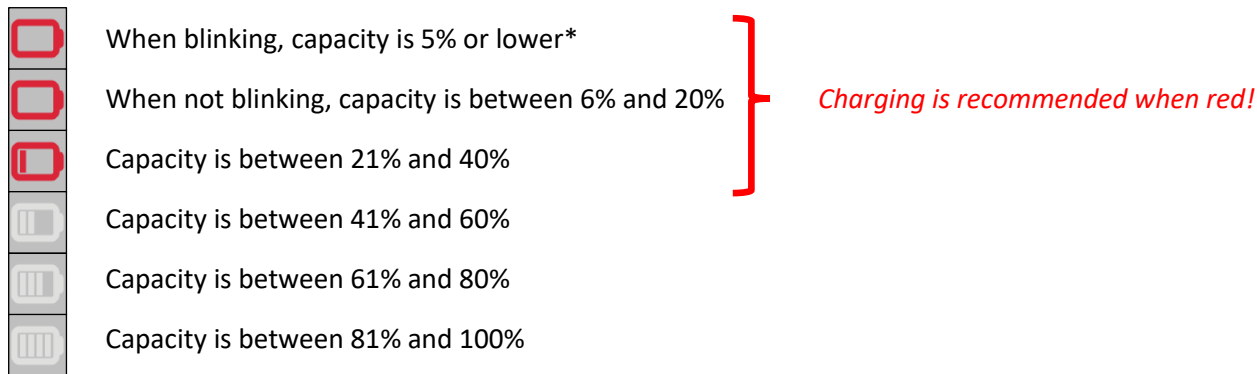
Charge indication

When the [Type-C USB charging cable](#) is connected to the charging port on the back of the player, the battery will charge, the charge indication icon will appear at the top of the screen and blink. The [charge LED](#) will also light up in **red** on the back of the device (but does not blink). Once fully charged the screen icon stops blinking and becomes **highlighted**. Once the battery is completely topped off, the LED will turn **green**. Both the icon and LED will persist until the cable is disconnected.

See [Charging Instructions](#) for more details.




Battery capacity

This icon always shows the current battery capacity according to the chart below:





**When the capacity drops below the minimum required for operation, Envision will turn itself off.*

Volume adjustment


When tapping the volume icon, the [volume slider](#) is displayed. The volume may be adjusted by moving the icon on the slider  either left (softer) or right (louder). As the volume is changed, the icon appearance will change as well. Sliding the indicator all the way to the left will mute the player. When muted this icon will be displayed:  . Tapping the volume icon again (or anywhere else on the screen) will hide the slider. Volume may be changed at any time, whether playback is active or not. ^{2 3}

Speakers and Audio Out

The Envision contains two very powerful internal speakers for resounding output.

You may also connect any audio output device to the [3.5mm stereo audio jack](#) on the back of the tablet. When a plug is inserted, the internal speakers will turn off, the volume icon will change to  and audio will be output to the connected device. When removing the plug, the internal speakers will turn back on and the icon will change back to .

Brightness adjustment

When the brightness icon is tapped, the [brightness slider](#) will be displayed. The brightness can be adjusted by moving the icon on the slider  either left (darker) or right (brighter). Tapping the brightness icon again (or anywhere else on the screen) will hide the slider. Brightness may be changed at any time, whether playback is active or not. ^{1 2 3}

¹The brightness icon is hidden during an A/V connection since brightness is controlled from the external device.

²Using moderate brightness and volume settings will preserve battery life.

³The volume and brightness sliders share the same area on the screen so only one may be accessed at a time.

Internal Storage

Since internal storage is permanent, this icon will always show at the top of the screen. When internal storage is the current input source the icon is **highlighted**. Selection of this storage may only be done from the [Input Device Selection Screen](#).


microSD Storage

Using microSD storage is optional and is done by inserting a card in the [external microSD connector](#). The icon shows in the top controls if there is a microSD card present in the card reader; otherwise, the area is blank. When it is chosen as the current input device, it becomes **highlighted**. Selection of this storage may only be done from the [Input Device Selection Screen](#). For limitations on microSD see [Input Devices](#).

OTG Storage

Using OTG storage is optional and is done by inserting an OTG device in the [external OTG connector](#). The icon shows in the top controls if there is an OTG device connected to the tablet; otherwise, the area is blank. When it is chosen as the current input device, it becomes **highlighted**. Selection of this storage may only be done from the [Input Device Selection Screen](#). For limitations on OTG see [Input Devices](#).

A/V (B02 only)

This icon only appears when an A/V device is connected. It changes to this icon  when the device becomes active. See section [Audio/Visual \(A/V\)](#) for details.

Image



Image screen – Main

Envision supports *most* BMP, GIF, JPG and PNG image file types. All Image files are stored in the **Image** folder. This folder may contain Individual image folders or single-file images.

**If there are no valid folders or files in the Image folder, Envision displays “The folder is empty”.*

Envision will attempt to generate thumbnail images for each image file present. If thumbnail files are included for folders, they must be JPG files like other thumbnails but with the extension changed to MVI.

**If an empty rectangle is displayed as the thumbnail, it typically means that the file is in progressive format that Envision cannot display.*

After selecting the Image icon, the initial screen lists all the folders and/or files that are currently available in the root **Image** folder. If there are more items than can fit on a single screen, the previous row  and/or next row  icons will be displayed at the top/bottom respectively. A tap on either icon will scroll by one row.

**Whenever the previous/next row icons appear, you may also swipe up or down to adjust the display.*

If some of the icons represent folders containing multiple image files, or even other sub-folders, there are three browser “views” you may select to present the image items within that folder:

Thumbnail  , Medium  and List  .

To select a folder or image file, tap on the file/folder (or its name) and it becomes **highlighted**. Once **highlighted** it is considered “selected”. Tap again to open it in the Image Viewer.

Image screen – Thumbnail view

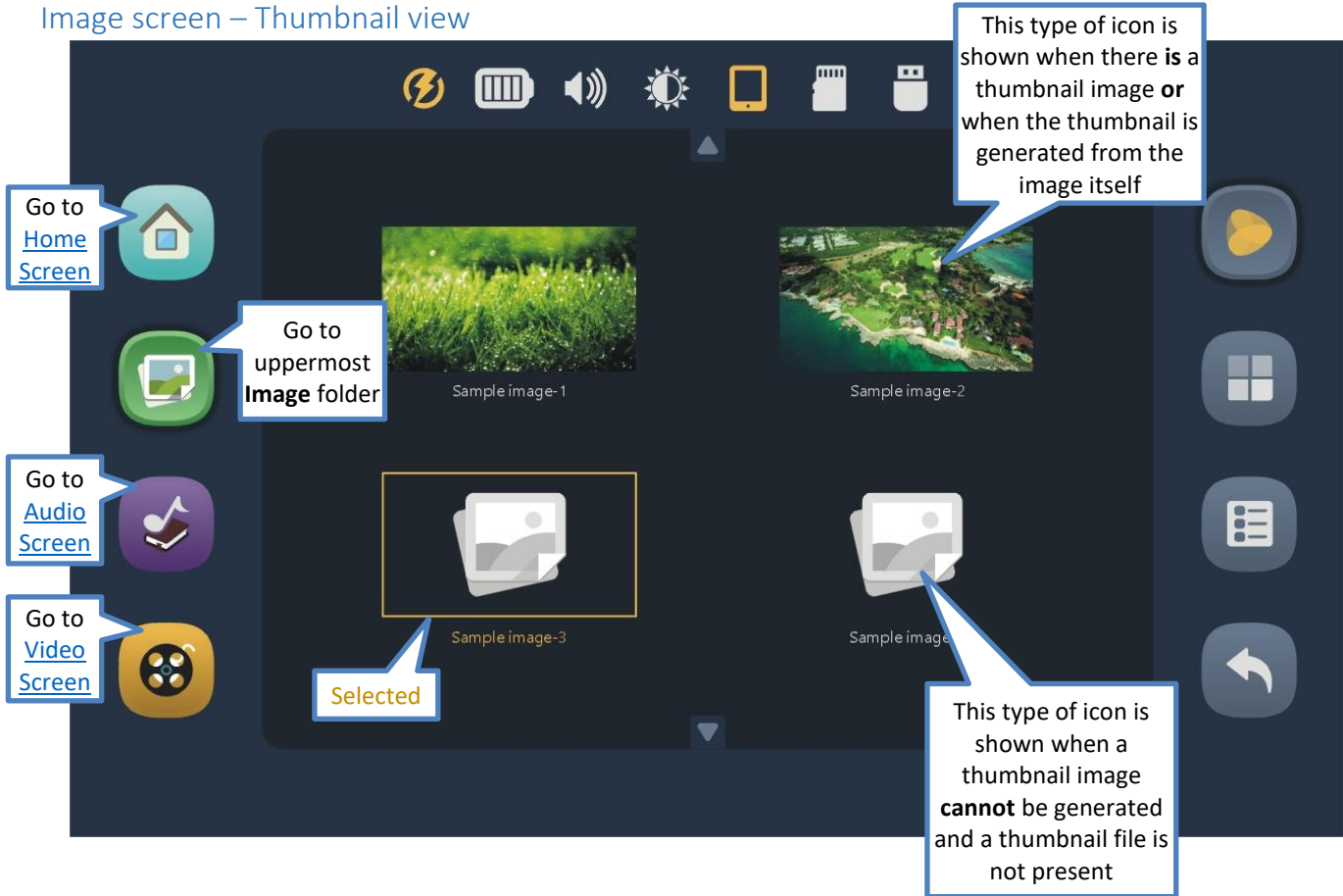


Image screen – Medium view

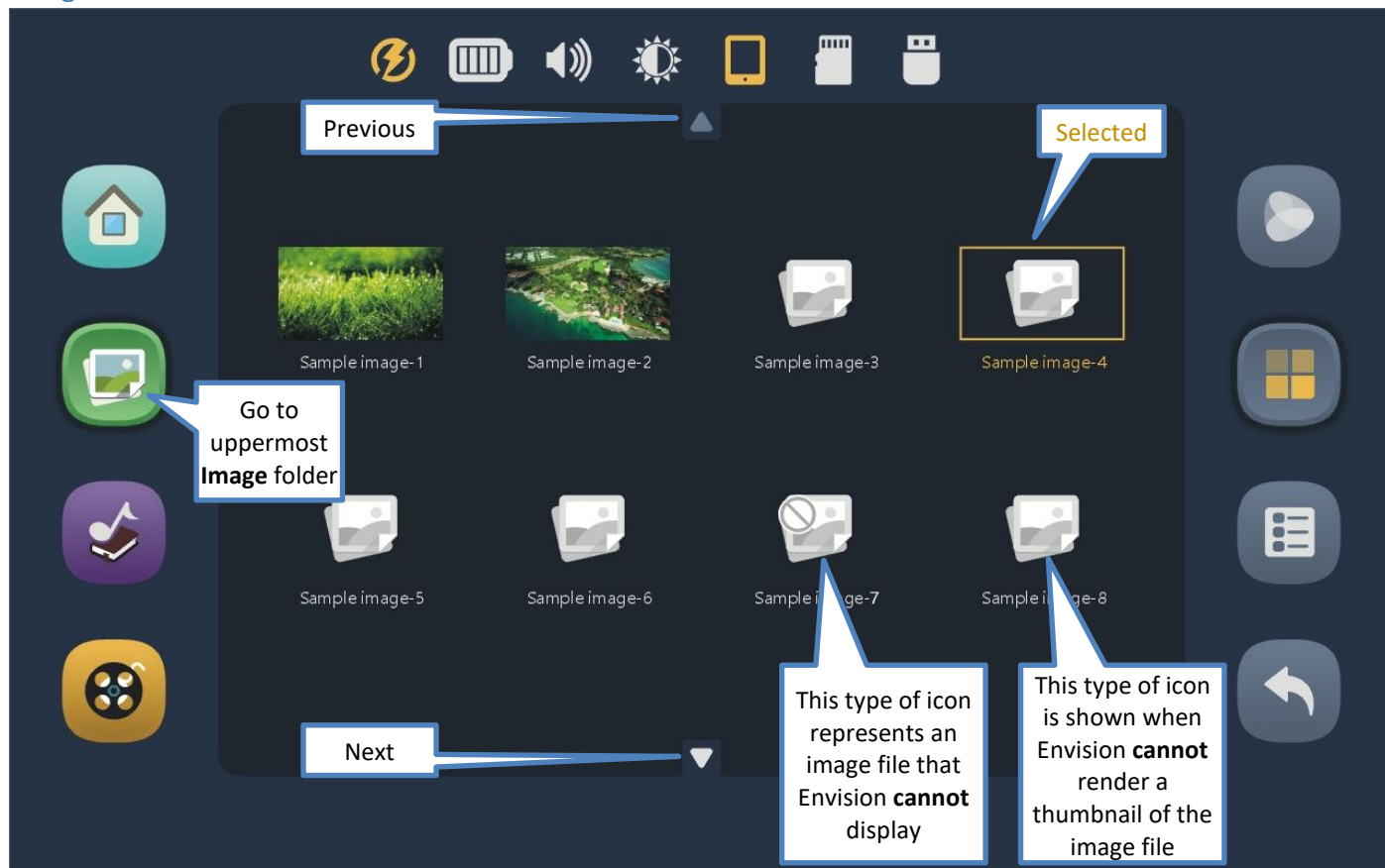


Image screen – List view

This is the most compact of the three views. To choose an image file for display, tap once to select (**highlight**) and then again to display it in the [Image Viewer](#).

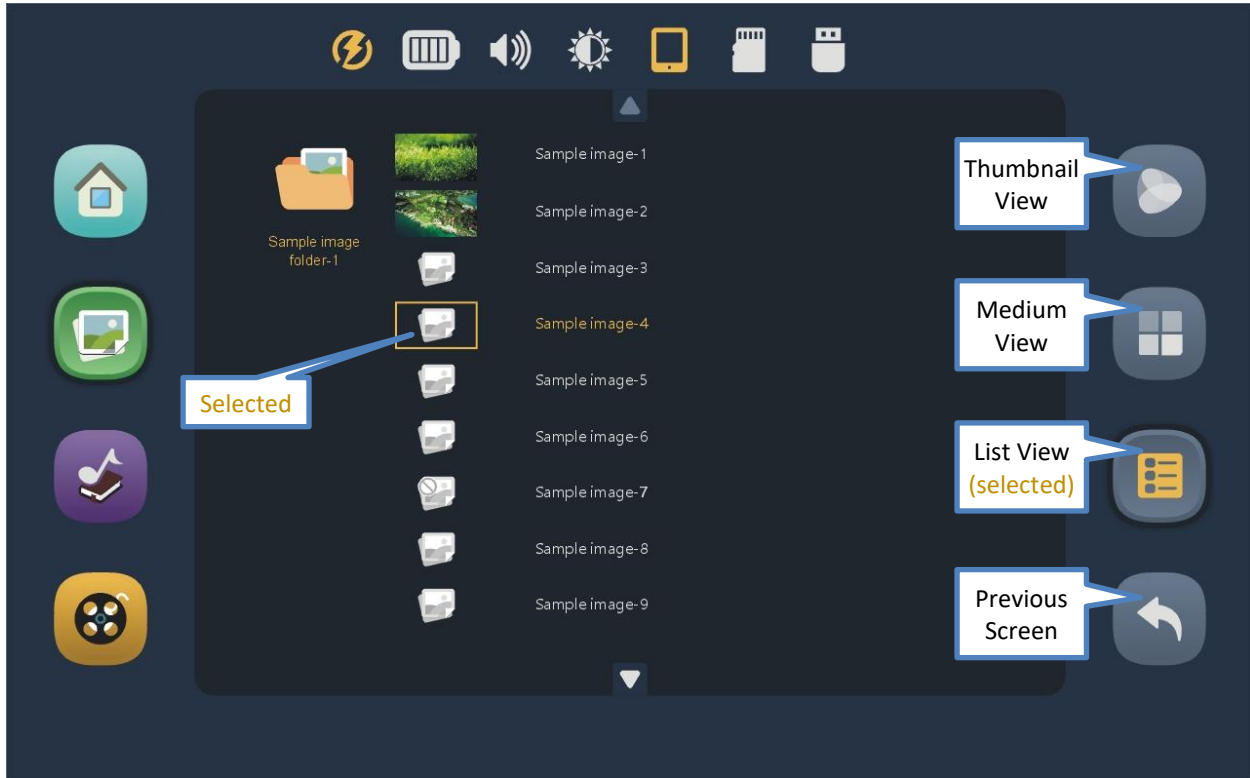


Image Viewer screen

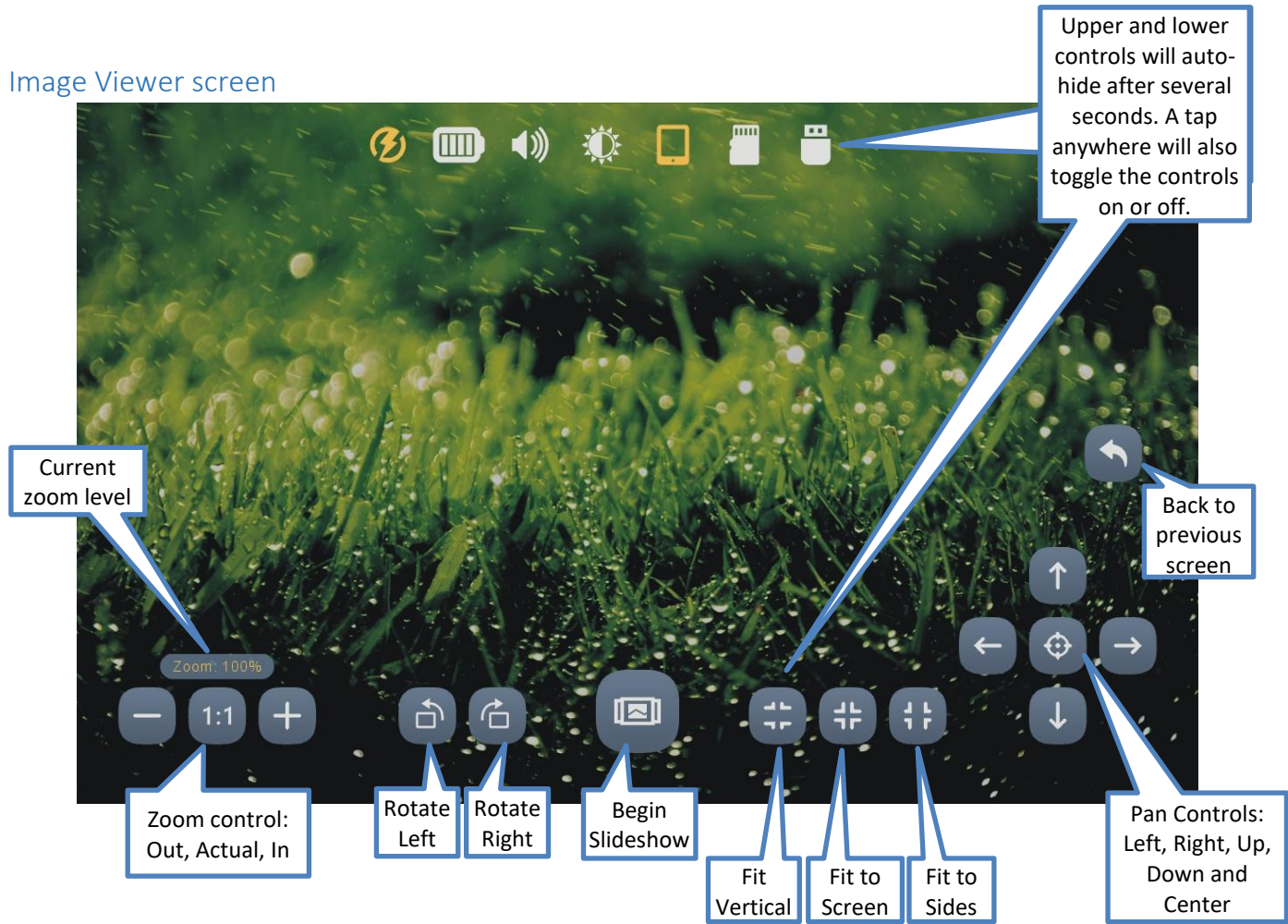


Image Slideshow Screen



Upper and lower controls will auto-hide after several seconds. A tap anywhere will also toggle the controls on or off.

Back to Image Viewer

Slideshow Speed:
From 2 to 20
second delay
between images

Shuffle
Previous Image
Play Pause
Next Image

Slideshow Speed



The time between images may be adjusted from 2 seconds to 20 seconds. The change can be made at any time during the slideshow presentation. The setting will persist until changed or a default reset is executed.

The slideshow will loop through all the images in the current folder at the set delay.

Shuffle



This feature will randomly shuffle the display order of all the images in the current folder. Tap once to turn the feature on and a second time to turn it off. The setting will persist until changed or a default reset is executed.

Previous file



Tap once to display the *previous* file in the current folder. If the *first* file in the folder is current, the player will navigate to the *last* file in the folder. This feature will work during the Slideshow or when it is paused. If Shuffle is turned on, the shuffled order is used.

Play/Pause



While the Slideshow is active, the Pause icon is displayed. Tap on it to suspend the Slideshow. The icon will change to the Play icon. Tap again to resume. The icon will revert to the Pause icon.

When the Slideshow is paused, it will remain in that state until manually resumed.

Next file





Tap once to begin playback of the *next* file in the current folder. If the *last* file in the folder is current, the player will navigate to the *first* file in the folder. This feature will work during the Slideshow or when it is paused. If Shuffle is turned on, the shuffled order is used.

Audio



Envision supports *most* AAC/M4A, APE, FLAC, MP3, OGG and WAV file types. All Audio is stored in the **Audio** folder. The Audio folder may contain other folders, or single audio files. Each folder may contain individual audio files or even other sub-folders.

**If there are no valid folders or files in the Audio folder, Envision displays “The folder is empty”.*

After selecting the Audio icon, the initial screen lists all the folders and/or files that are currently available in the root **Audio** folder. If there are more items than can fit on a single screen, the previous row  and/or next row  icons will be displayed at the top/bottom respectively. A tap on either icon will scroll by one row.

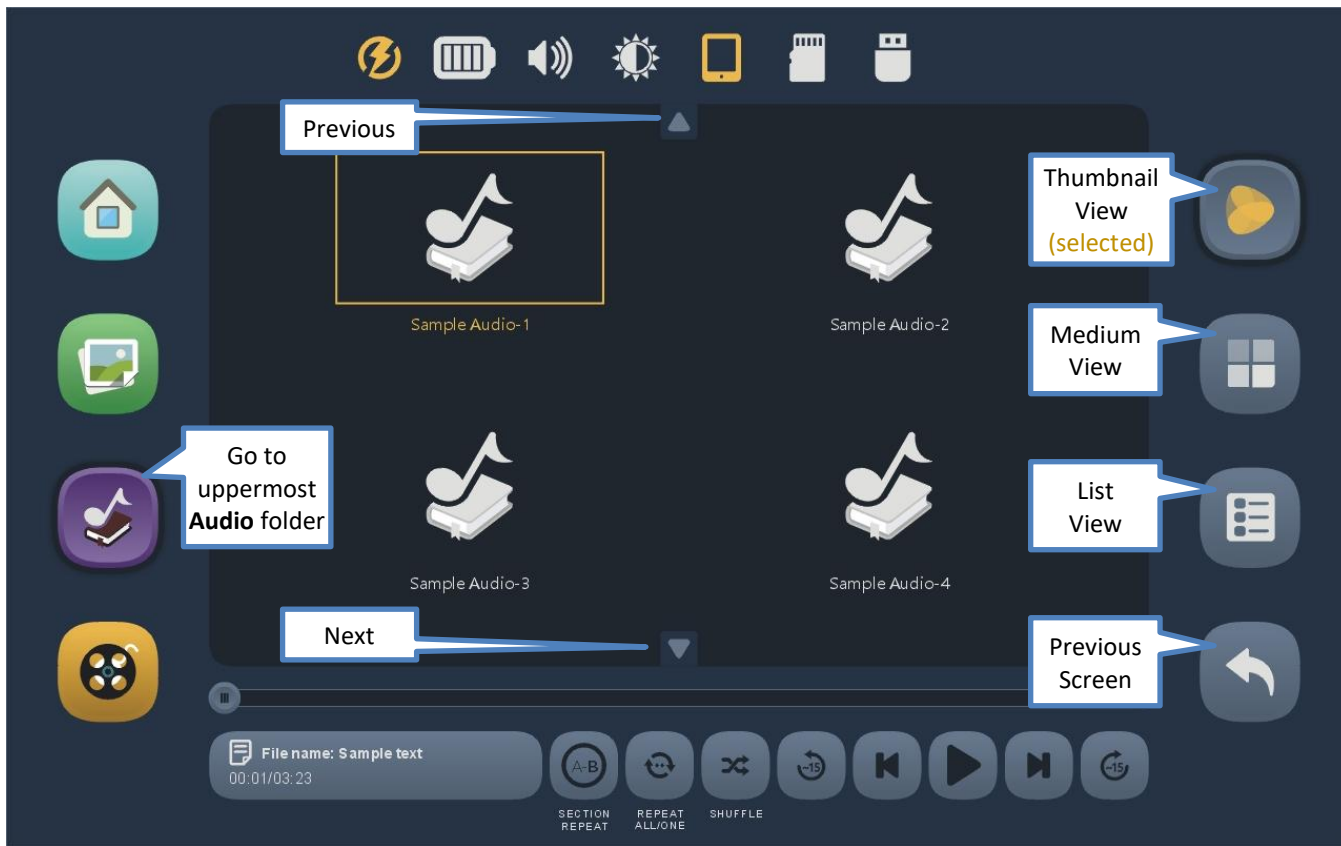
**Whenever the previous/next row icons appear, you may also swipe up or down to scroll the display.*

There are three browser views you may select to present the Books and the Chapters within a Book:

Thumbnail  , Medium  and List  .

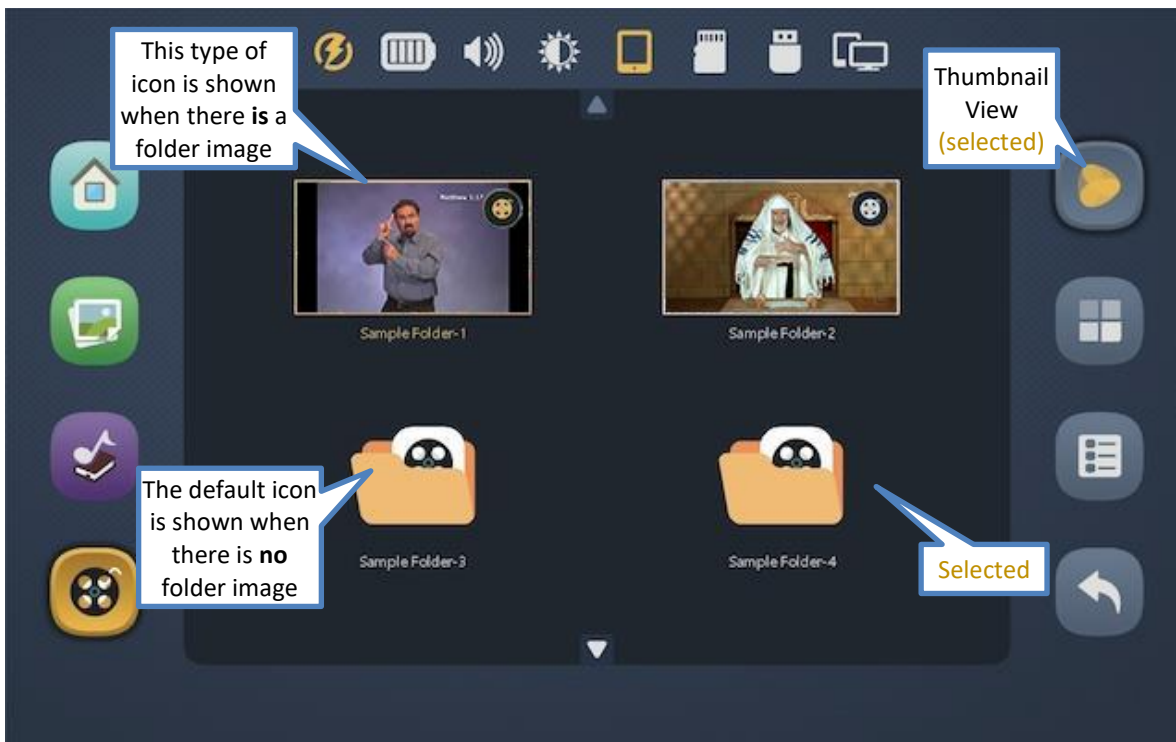
To select a folder or file tap the icon (or its name) and it becomes **highlighted**. Once **highlighted** it is considered “selected”. Tap again to open it.

Audio screen – Thumbnail view



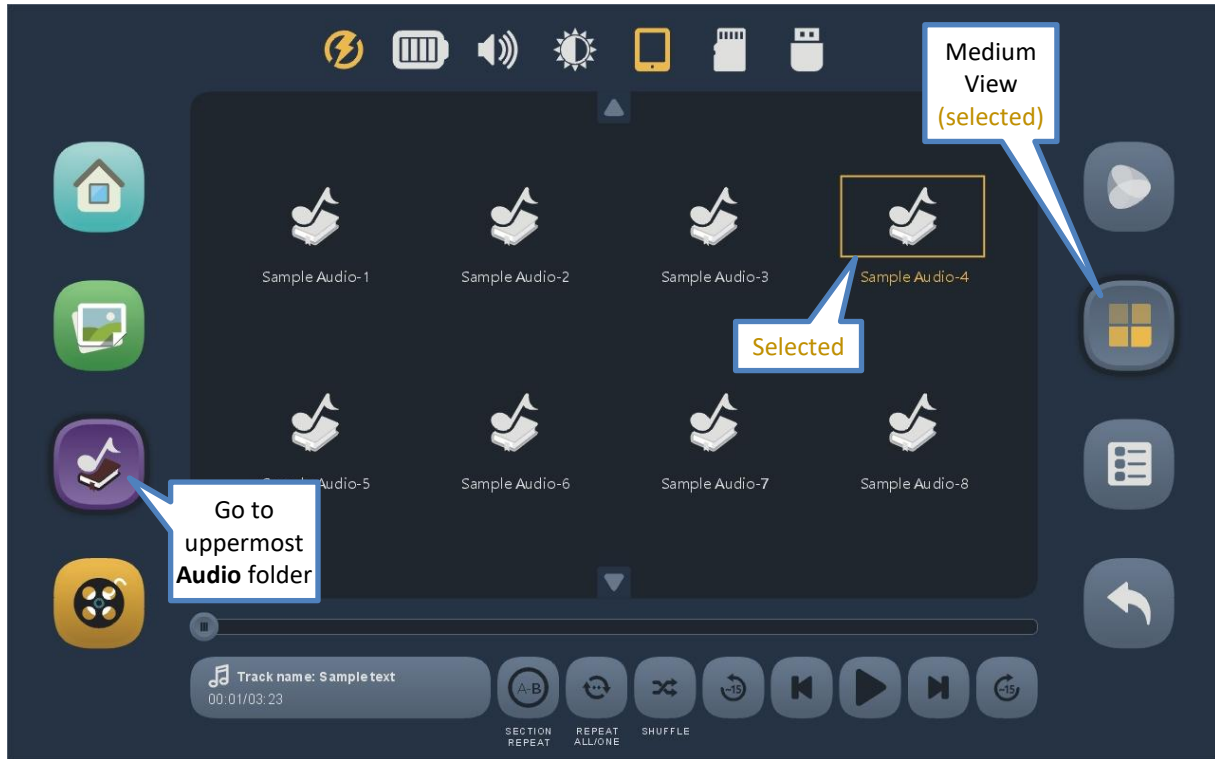
Audio screen – Thumbnail view with corresponding folder images

The Envision supports thumbnail images to be associated with folders. If the content includes these image files, then the corresponding thumbnail image is displayed for the folder. If no image is supplied, a default folder icon is displayed instead.



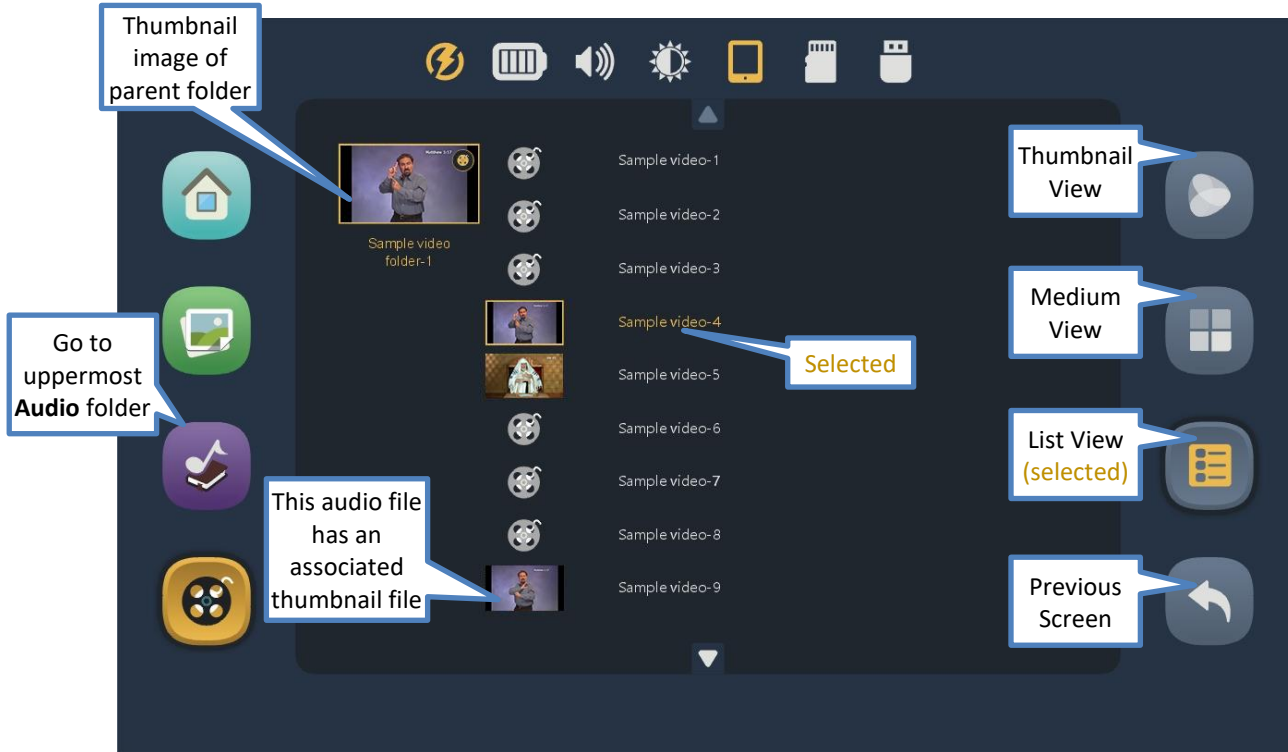
Audio screen – Medium view

The Medium view is more compact than the Thumbnail view, showing up to eight items (audio files) with slightly smaller icons in two rows.



Audio screen – List view

The list view is the most compact of the three views, showing up to eight items (audio files) at a time. Very long names are easier to read in this view. If the name is longer than the allotted screen area, it will scroll when **selected**. To choose a file for playback, tap once to select (**becomes highlighted**) and then again to play.



Audio screen – Playback

Individual thumbnail image is displayed during playback if provided

Playback position slider

Upper and lower controls will auto-hide after several seconds. A tap anywhere will also toggle the controls on or off.

Current folder and file, ID3 tags (if available), current location, total play time

Section repeat

Repeat all/one

Shuffle

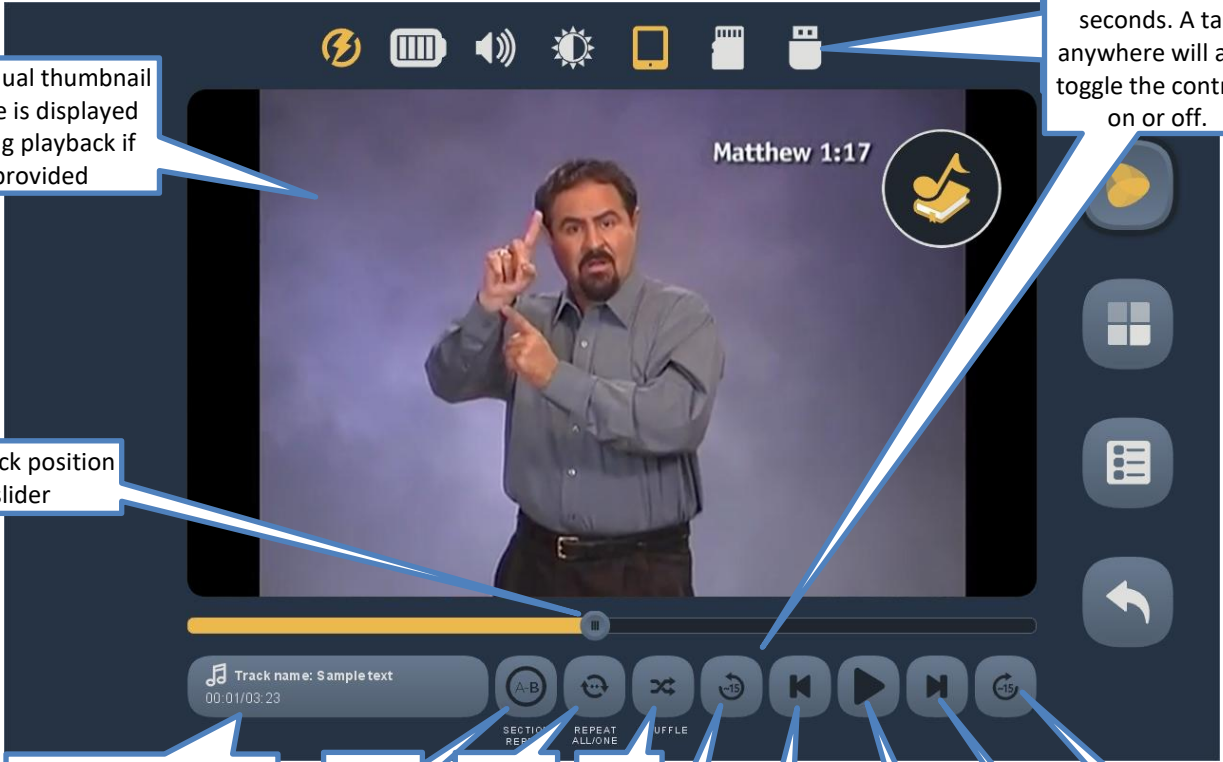
Back 15 seconds

Previous file

Play/Pause

Next file

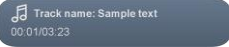
Forward 15 seconds



Playback position slider

The slider icon always shows the current playback position relative to the current file. You may drag this icon in either direction to reposition playback.

Current file information



In this area, the folder and full name of the current file are displayed. If any of the ID3 tags Track name, Album or Artist are defined for the audio file, they will be rotated in the display as well. If any text is too long for the area, it will slowly scroll. On the next line, current playback position and total playtime of the file are shown in HH:MM:SS (hours:minutes:seconds) format.

Section repeat

This feature allows you to mark a section of audio within the current file for repetitive playback. Place the playback position and tap the icon once to set the “start” or (A) playback point. The icon text will change to white indicating that “A” has been set. Once the position slider reaches the desired “end”, or (B) point, tap the icon again. The icon text will be **highlighted** to show that both A and B have been set. Playback will now loop automatically between the (A) and (B) points. To turn the option off tap the icon a third time. The setting will persist until changed or a default reset is executed.

Repeat all/one

This feature facilitates repeating a single audio file or all the files in the current folder. Tap the icon once for “all” files. Tap the icon a second time for one file (the current file). To turn the option off, tap the icon a third time.

Shuffle

This feature will randomly shuffle all the files in the current folder. It is especially useful when listening to a folder containing musical content. Tap once to turn the feature on and a second time to turn it off. The setting will persist until changed or a default reset is executed.

Back 15 seconds

Tap once to reverse *approximately* 15 seconds in the current file. This feature will work during playback or while playback is paused.

Previous file


Tap once to begin playback of the *previous* file in the current folder. If the *first* file in the folder is current, the player will navigate to the *last* file in the folder. This feature will work during playback or while playback is paused. If Shuffle is turned on, the shuffled order is used.

Play/Pause

While playback is active, the Pause icon is displayed. Tap on it to pause playback. The icon will change to the Play icon. Tap again to resume playback. The icon will revert to the Pause icon. When Playback is paused, it will remain in that state until manually resumed.

Next file 

Tap once to begin playback of the *next* file in the current folder. If the *last* file in the folder is current, the player will navigate to the *first* file in the folder. This feature will work during playback or while playback is paused. If Shuffle is turned on, the shuffled order is used.

Forward 15 seconds 



Tap once to fast-forward *approximately* 15 seconds in the current file. This feature will work during playback or while playback is paused.

Video

Video screen – Main



Envision supports *most* AVI, FLV, MKV, MOV, MPG and MP4/M4V video file types. All Video is stored in the **Video** folder. This folder may contain individual video folders (movies comprised of sections or chapters) or single-file videos. If album art images for each folder and/or file are present, they will be rendered as thumbnails along with their names. If no associated images are provided, the standard icon is displayed instead.

**If there are no valid folders or files in the Video folder, Envision displays “The folder is empty”.*

After selecting the Video icon, the initial screen lists all the folders and/or files that are currently available in the root **Video** folder. If there are more items than can fit on a single screen, the previous row  and/or next row  icons will be displayed at the top/bottom respectively. A tap on either icon will scroll by one row.

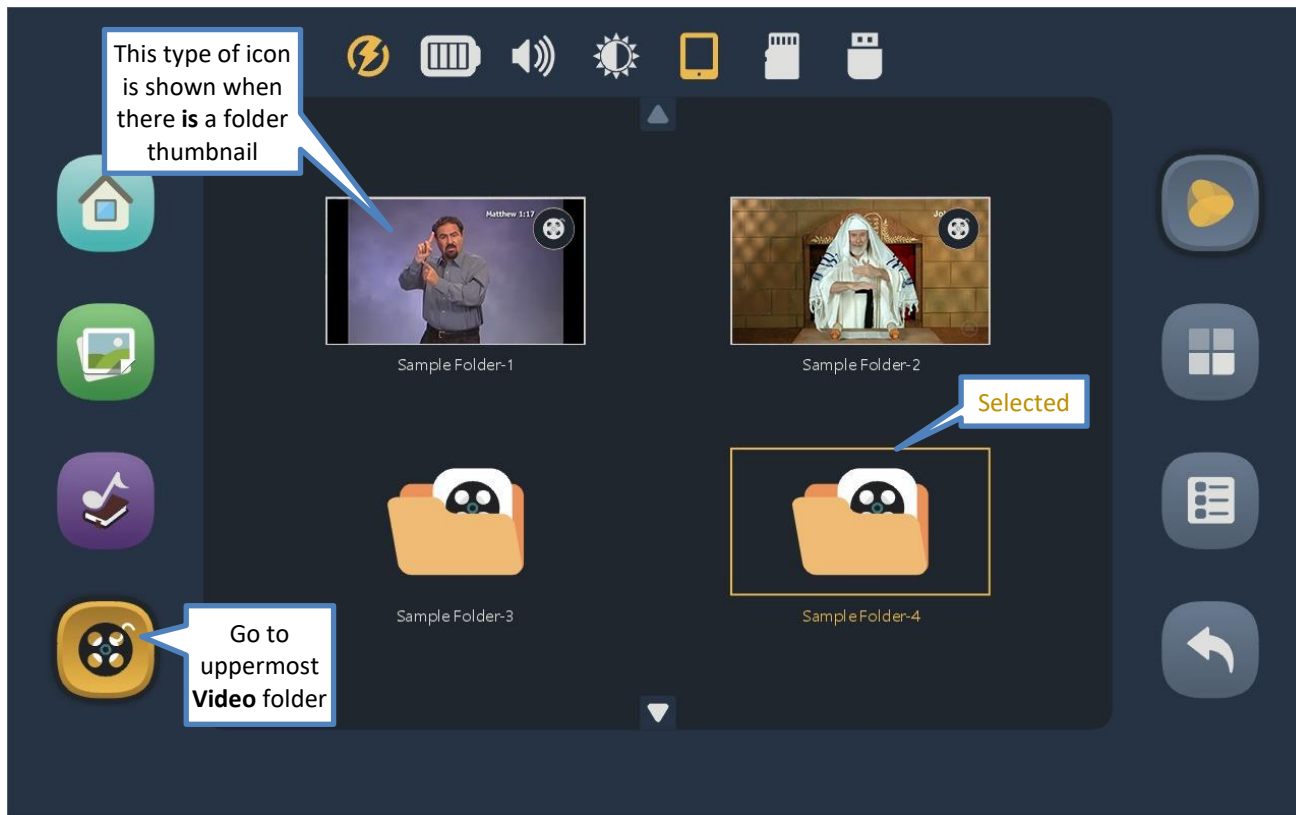
**Whenever the previous/next row icons appear, you may also swipe up or down to adjust the display.*

If some of the icons represent folders containing multiple video files, or even other sub-folders, there are three browser “views” you may select to present the items within that folder:

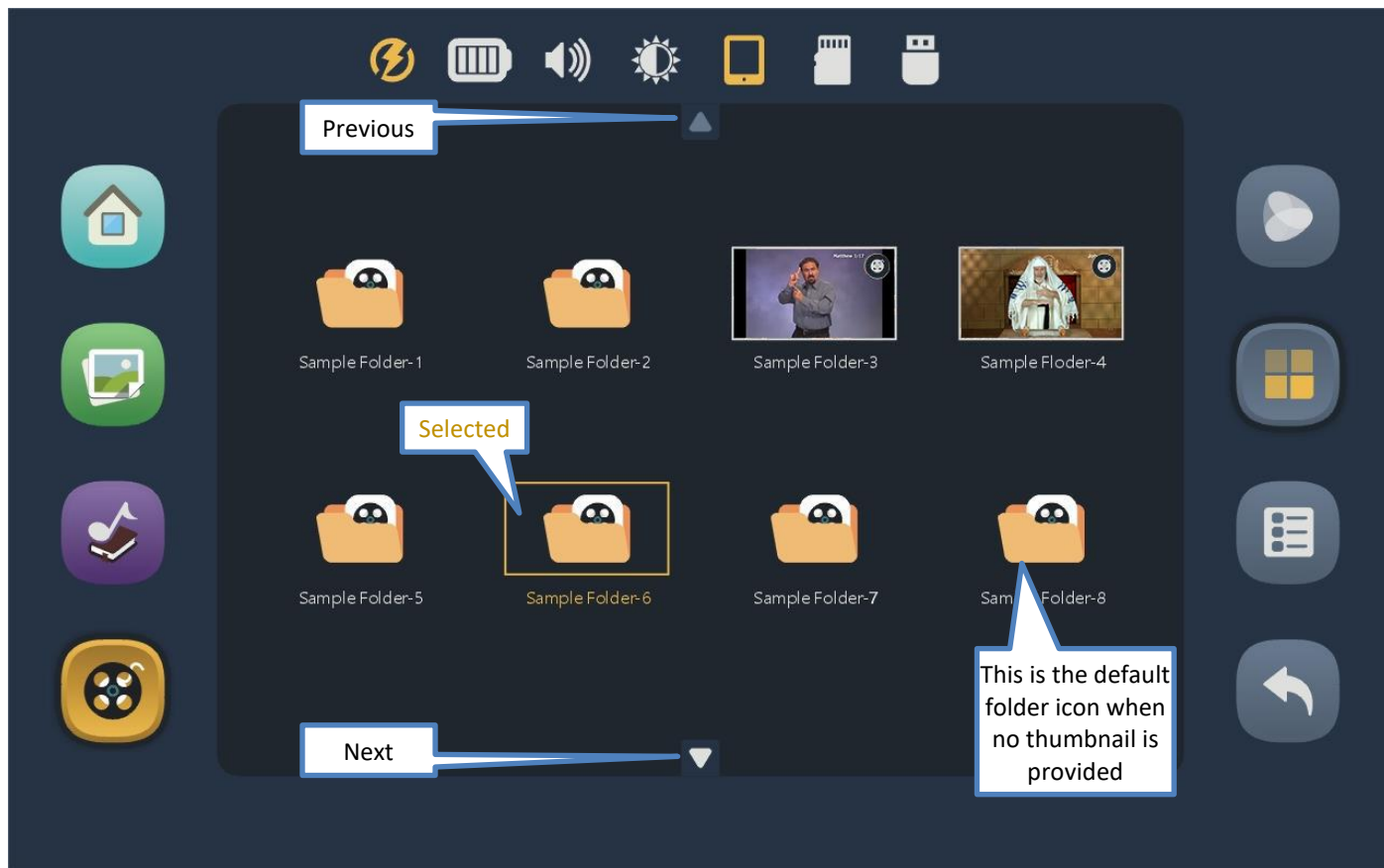
Thumbnail  , Medium  and List  .

To select a folder or video file, tap on the video icon (or name) and it becomes **highlighted**. Once **highlighted** it is considered “selected”. Tap again to open it.

Video screen – Thumbnail view

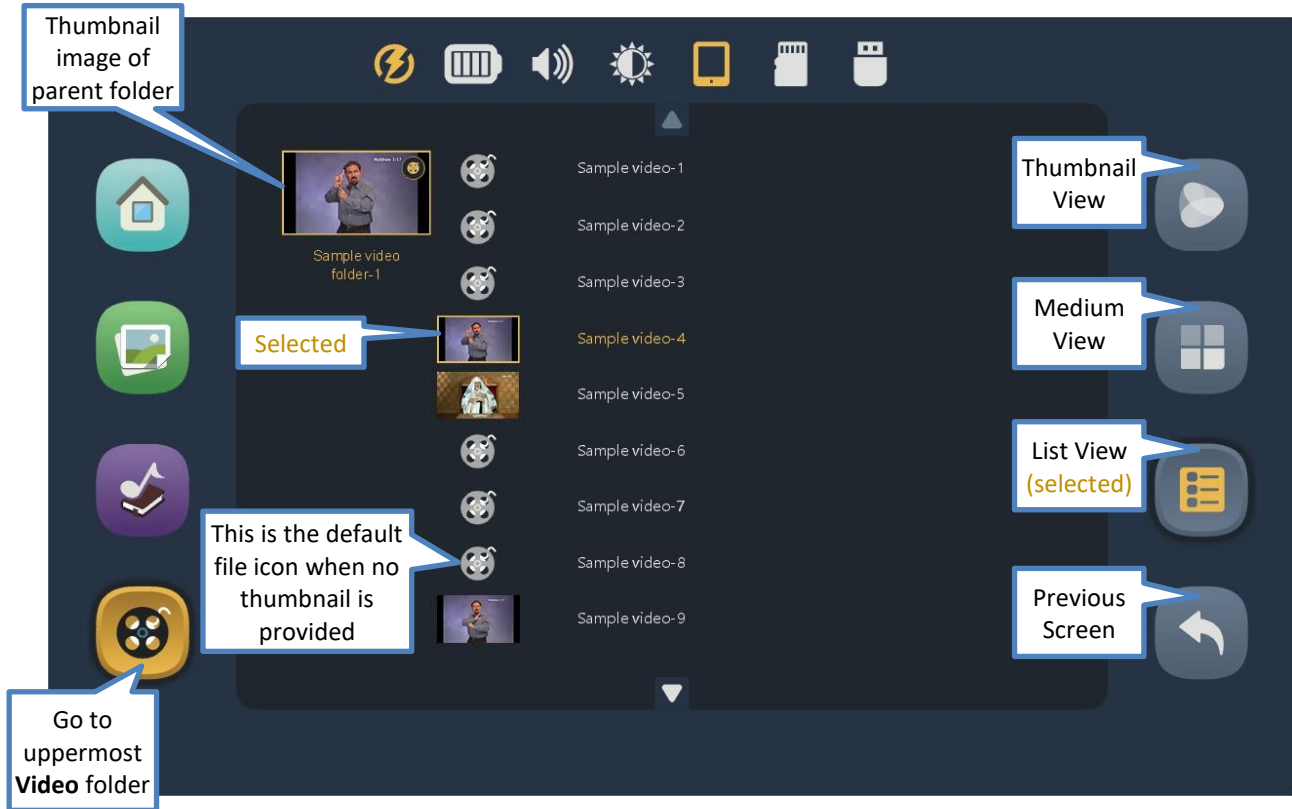


Video screen – Medium view



Video screen – List view

This is the most compact of the three views. If the name is longer than the allotted screen area, it will scroll when **selected**. To choose a Chapter (video file) for playback, tap once to select (**highlight**) and then again to play.



Video screen – Playback

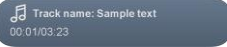
The image shows a video player interface with a central video frame displaying a man in a grey shirt. The video title "Matthew 1:17" is visible in the top right corner of the video frame. At the top of the screen, there is a status bar with icons for battery, volume, brightness, mobile signal, Wi-Fi, and USB. A callout points to this status bar with the text: "Upper and lower controls will auto-hide after several seconds. A tap anywhere will also toggle the controls on or off." Below the video frame is a playback position slider, with a callout: "Playback position slider". At the bottom of the screen is a playback control bar. From left to right, it contains: a track information box showing "Track name: Sample text" and "00:01/03:23" (with a callout: "Current folder and file, current location, total play time"); a "Section repeat" button (A-B); a "Repeat all/one" button (with a callout: "Repeat all/one"); a "Shuffle" button (with a callout: "Shuffle"); a "Back 15 seconds" button (with a callout: "Back 15 seconds"); a "Previous file" button (with a callout: "Previous file"); a "Play/Pause" button (with a callout: "Play/ Pause"); a "Next file" button (with a callout: "Next file"); and a "Forward 15 seconds" button (with a callout: "Forward 15 seconds"). On the right side of the screen, there is a "Back to previous screen" button (with a callout: "Back to previous screen").

Playback position slider



The slider icon always shows the current playback position relative to the current file. You may drag this icon in either direction to reposition playback.

Current file information



In this area, the folder and full name of the current file are displayed. If any of the ID3 tags Track name, Album or Artist are defined for the video file, they will be rotated in the display as well. If any text is too long for the area, it will slowly scroll. On the next line, current playback position and total playtime of the file are shown in HH:MM:SS (hours:minutes:seconds) format.

Section repeat



This feature allows you to mark a section of video within the current file for repetitive playback. Place the playback position and tap the icon once to set the “start” or (A) playback point. The icon will change to white text indicating that “A” has been set. Once the position slider reaches the desired “end”, or (B) point, tap the icon again. The icon text will be **highlighted** to show that both A and B have been set. Playback will now loop automatically between the (A) and (B) points. To turn the option off tap the icon a third time. The setting will persist until changed or a default reset is executed.

Repeat all/one



This feature facilitates repeating a single video file or all the files in the current folder. Tap the icon once for “all” files. Tap the icon a second time for one file (the current file). To turn the option off, tap the icon a third time.

Shuffle



This feature will randomly shuffle all the files in the current folder. It is especially useful when listening to a folder containing musical content. Tap once to turn the feature on and a second time to turn it off.

Back 15 seconds

Tap once to reverse *approximately* 15 seconds in the current file. This feature will work during playback or while playback is paused.

Previous file

Tap once to begin playback of the *previous* file in the current folder. If the *first* file in the folder is current, the player will navigate to the *last* file in the folder. This feature will work during playback or while playback is paused. If Shuffle is turned on, the shuffled order is used.

Play/Pause

While playback is active, the Pause icon is displayed. Tap on it to pause playback. The icon will change to the Play icon. Tap again to resume playback. The icon will revert to the Pause icon.

When Playback is paused, it will remain in that state until manually resumed.

Next file

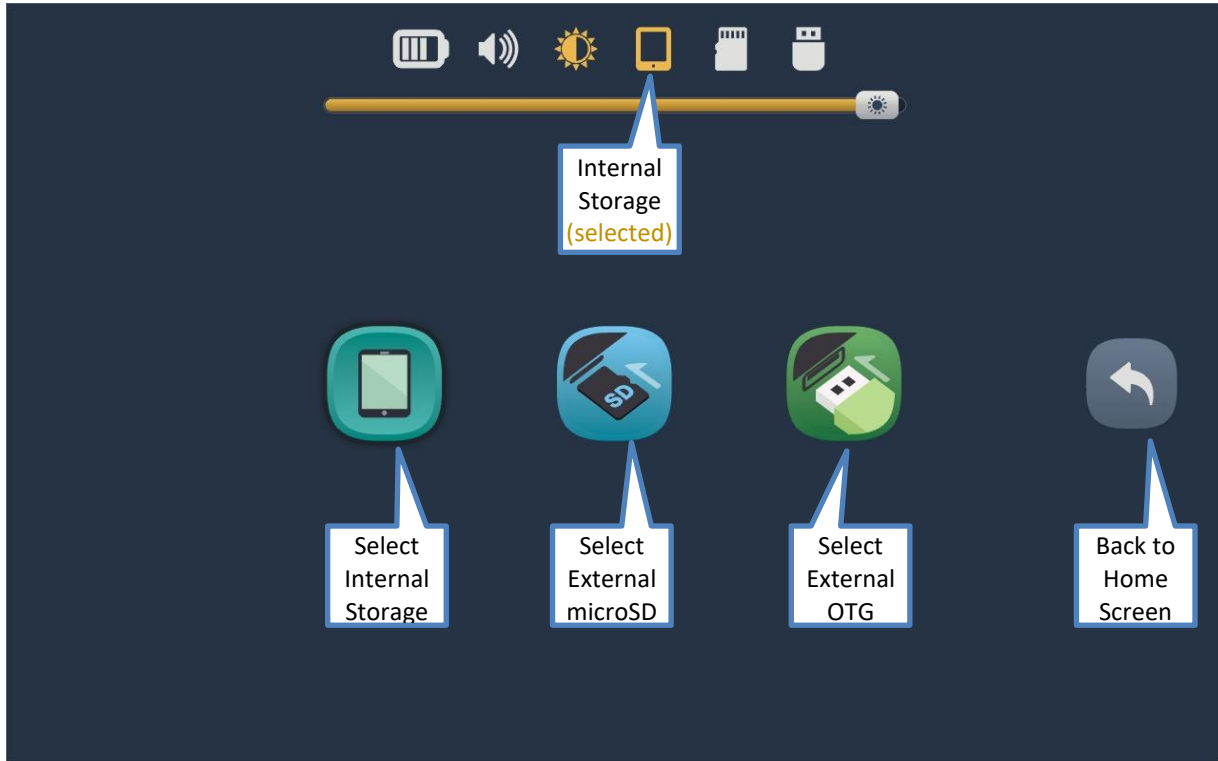
Tap once to begin playback of the *next* file in the current folder. If the *last* file in the folder is current, the player will navigate to the *first* file in the folder. This feature will work during playback or while playback is paused. If Shuffle is turned on, the shuffled order is used.

Forward 15 seconds

Tap once to fast-forward *approximately* 15 seconds in the current file. This feature will work during playback or while playback is paused.

Input Device Selection Screen

Tap on a button representing the available storage devices currently connected, then return to the Home Screen. If neither of the *external* devices are connected at the time, their respective buttons will be disabled.



Information Screen

Presented on this screen is basic information about the MegaVoice Envision.

The screenshot shows the Information Screen with a top status bar containing icons for power, battery, volume, brightness, mobile signal, Wi-Fi, and USB. The main content area displays system information for a device with Model Number B02 and Firmware Revision B02-T7-20200402. The storage section shows a selected MicroSD card with 7.49GB total size and 4.10GB available. Security options are listed for both internal and external storage. Navigation options are provided on the left and bottom, and a back button is on the right.

| System Info | |
|-----------------------------|---|
| Model Number: | B02 |
| Firmware Revision: | B02-T7-20200402 |
| Storage: | MicroSD |
| Storage Size: | 7.49GB |
| Available Storage Size: | 4.10GB |
| File System: | FAT32 |
| Allocation Unit Size: | 32.0KB |
| Volume Label: | SDMMC-DISK |
| Security Options in effect: | Internal: SLS Only; Encrypted & Non-Encrypted External: SLS & Non-SLS; Encrypted & Non-Encrypted |

Navigation options on the left:

- Go to [Home Screen](#)
- Go to [Image Screen](#)
- Go to [Audio Screen](#)
- Go to [Video Screen](#)

Navigation options at the bottom:

- Regulatory info
- Sleep mode
- Restart
- Power off

Navigation options on the right:

- Back to previous screen

Regulatory info

Tap this icon to display all regulatory and certification information applicable to the Envision.

Sleep mode

Tap this icon to put the player in Sleep mode. This is the same as a click on the [power button](#) to turn the screen off. The player is still “on”, just without screen display. A click on the power button will also turn the screen back on. *This feature is disabled in A/V mode.*

Restart

Tap this icon to restart (reboot) the player. A dialog will be displayed with a slider to confirm restart. Moving the slider all the way to the right will execute the restart procedure.

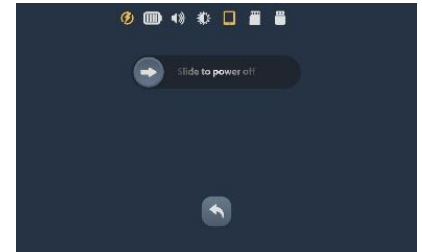
Power off

Tap this icon to turn the player off. A dialog will be displayed with a slider to confirm shutdown. Dragging the slider all the way to the right will execute the power-off procedure. Pressing and holding the [power button](#) for 2 seconds will also display the power-off dialog.

**If, for some reason, the player becomes non-responsive, inserting a paper clip into the [hardware reset](#) hole on the back of the tablet and gently pressing the internal switch will disconnect the battery and power off the device.*

Back to Previous Screen

This icon appears on many screens. Tapping it will always return to the *previous* screen.




Technical

Charging Instructions



The MegaVoice Envision is powered by an internal Lithium-Ion battery. With proper care, the battery should perform well for several years. When shipped, the battery is only partially charged. Before use, it is recommended to fully charge the Envision.

Using the “Type-C to Type-A USB” cable (shown at right) that came with the Envision, you can easily charge the tablet using one of the methods below:



 For fastest charge, connect any standard “USB” **charger** (regulated **5VDC**, minimum 300mA) (or **power bank** or **solar panel** ²) to the [Type-C USB port](#) on the back of the tablet until the charging icon stops blinking. ¹

 Connect the tablet from any standard computer USB port to the [Type-C USB port](#) on the back of the Envision until the charging icon stops blinking. ¹

If the tablet is on, a charging icon  will appear at the [top left of the screen](#). While charging, this icon will blink. When the battery is fully charged, the icon will stop blinking but becomes **highlighted**  and remains displayed as long as the USB cable is connected.

¹Actual charge time will vary according to the current battery capacity and charging source.

²A solar panel is the least stable/reliable among wall charger, power bank or solar panel.

³While connected to a charging source, the [small LED](#) will remain lit (whether Envision is on or off).

Bookmarking

Bookmarks are automatically stored in memory and will persist while Envision is on. But when an input storage device is formatted with FAT or FAT32 file systems, Envision can also save those bookmarks to the storage media. **To ensure that bookmarks are properly saved, return to the Home Screen before removing external devices.*

The following bookmarks will persist on the input device until intentionally changed:

- Last folder accessed
- Last sub-folder accessed (if any)
- Last file accessed within folder
- Last playback position within each file previously played (Audio/Video only)

Supported File Types

| | |
|-------|--------------------------------------|
| Image | BMP, GIF, JPG and PNG |
| Audio | AAC/M4A, APE, FLAC, MP3, OGG and WAV |
| Video | AVI, FLV, MKV, MOV, MPG and MP4/M4V |

For more details see the Envision User Guide:

<https://megavoice.com/pdf/megavoice-envision-english-user-guide.pdf>

There may always be exceptions to the files listed above. Please feel free to contact us at megavoice.com/support for assistance if needed.

Input Devices

Internal Storage

Internal storage size is determined per order at the time of assembly. It can be from 4GB to 128GB.

For **read** access only, Envision supports the following file system formats:

- FAT32
- NTFS³
- exFAT³

For **read and write** access (to save the bookmarks automatically), Envision supports only the following:

- FAT32

microSD card¹

The following card **types** are supported in up to 128GB capacity:

- microSD
- SDHC
- SDXC

For **read** access only, Envision supports the following file system formats:

- FAT32
- NTFS³
- exFAT³

For **read and write** access (to save the bookmarks automatically), Envision supports only the following:

- FAT32

OTG^{1,2}


Most common OTG devices with a USB Type-A connector are supported in up to 128GB capacity:


For **read** access only, Envision supports the following file system formats:


- FAT32
- NTFS³
- exFAT³

For **read and write** access (to save the bookmarks automatically), Envision supports only the following:

- FAT32

¹  Envision may not recognize devices with unusual File System/cluster size combinations.

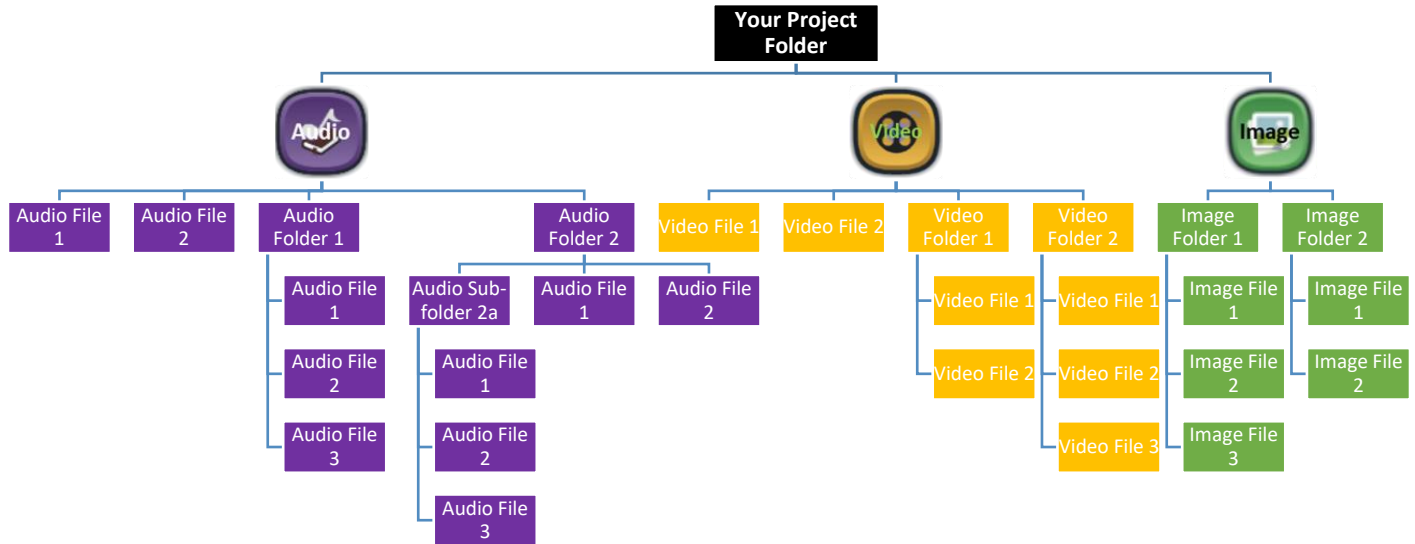
²  Faulty or low-quality OTG devices may cause Envision to lock up when connecting them.

³  If you wish to load files that are greater than 4GB in size, NTFS or exFAT must be used. For NTFS, max cluster size is 32K.

Folder Structure

The folder structure for Envision is quite flexible and is the same for all [Input Devices](#). Folders in the root must have the mandatory names of **Audio**, **Video** and **Image** (case is not important). Each of the main folders may contain valid files of that type and/or other folders containing files of that type. Naming for other sub-folders and files within the folders is free text¹ but must sort in the order they should display or play.

¹Currently, Envision only supports file names in English or Chinese text. Files named using any other language may need to be renamed to display correctly or display at all.



Problems with the Envision?

If the tablet will not turn on, or will not operate properly, please try the following:

1. Please make sure the battery is charged per [Charging Instructions](#). After charging, try to turn the player on. If the battery will not charge it must be replaced by a qualified technician.
2. Make sure that the proper input device is connected, selected and recognized by the tablet. Make sure it has been properly formatted and prepared with media files using the [recommended structure and naming](#). See [Input Device Selection Screen](#) and [Input Devices](#) for more details.
3. If the tablet is not responsive, insert a paper clip into the [hardware reset](#) hole on the back of the player next to the power button. Gently press on the internal switch, which disconnects and reconnects the battery. Try again to turn the player on.
4. If the above did not help, please contact us at megavoice.com/support for assistance.

Warnings

- Care must be taken to set the volume at the lowest level that can be heard comfortably. Prolonged exposure to loud sound can cause gradual hearing loss.
- DO NOT expose the player or battery to fire, extreme heat or intense direct sunlight.
- Stop using the player if you observe abnormal heat, odor, discoloration, leakage or deformation. Refer to a qualified technician for service.
- The Envision battery should only be removed by a qualified technician. If removed, handle it with care. Keep the exposed battery out of reach of children. DO NOT burn, puncture, disassemble, or modify the battery.
- If the battery leaks, dispose of it carefully in accordance with all local laws. Wash any skin or clothing exposed to battery liquid and avoid swallowing or contact with eyes. In the case of swallowing or contact with eyes, seek medical care immediately.

Certifications



This device complies with part 15 of the FCC Rules. Operation is subject to the following two conditions: (1) This device may not cause harmful interference, and (2) this device must accept any interference received, including interference that may cause undesired operation.