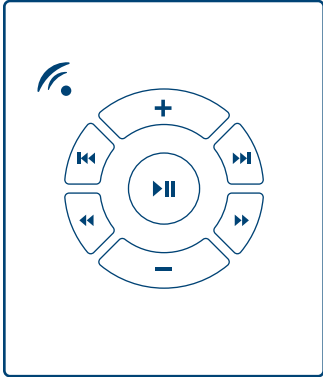
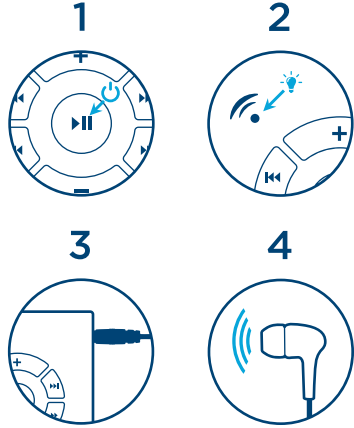


## HERALD



## EASY START

Press and hold until the LED lights up and HERALD beeps. HERALD will turn on and resume playback from the last playback position.



1

## TURNING HERALD ON/OFF

To turn HERALD on, press and hold in the middle of the keypad until the LED lights up and the player beeps.

Press again for 2 seconds to turn the player off (player will beep twice and turn the LED off).

## NAVIGATING DURING PLAYBACK

See structuring rules under INTERNAL MEMORY.

HERALD contains one or more Books. Each Book contains one or more Chapters (or audio files).

2

Click or to jump backward or forward one Book.

When is clicked and the *first* Book in the memory is currently playing, the last Book will be played.

When is clicked and the *last* Book is being played, the first Book will be played.

Continuous press<sup>1</sup> on or will continue to skip to the beginning of the previous/next Book until the button is released or the last/first Book is reached.

Click or to jump backward or forward one Chapter within the current Book.

When is clicked, and the *first* Chapter is currently playing, the last Chapter in the previous Book will be played.

3

When is clicked and the *last* Chapter is being played, the first Chapter in the next Book will be played.

A 2-second press will skip approximately 17 seconds<sup>2</sup> within the current Chapter.

A continuous press<sup>1</sup> will continue to skip within the current Chapter until the button is released or the end/beginning of the Chapter is reached.

<sup>1</sup>During continuous press, HERALD will emit a low beep and the LED will blink.

<sup>2</sup>Actual time may vary.

<sup>3</sup>The buttons can remember button clicks. For example, if you click 5 times on , playback will resume after quickly skipping forward 5 Chapters.

<sup>4</sup>After the last Chapter in the last Book

4

is played, playback will automatically continue with the first Chapter of the first Book.

PAUSING/  
BOOKMARKING

While in playback, click to pause the audio. HERALD will bookmark<sup>1</sup> the current position and the LED will begin to blink intermittently.

To resume playback, click again.

<sup>1</sup>Bookmarking on HERALD is completely automatic. Whenever paused, or turned off, HERALD will bookmark the current playback position.

<sup>2</sup>If HERALD is paused for more than 5 minutes, it will automatically turn itself off.

5

RESETTING  
HERALD

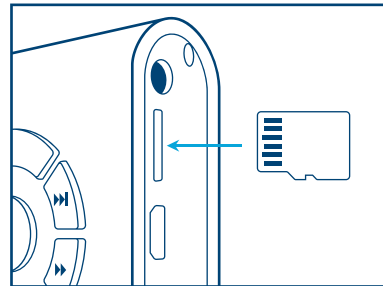
Resetting player defaults (listed below) is done by pausing the player and pressing for 2 seconds. HERALD will beep 3 times and then turn itself off (additional 2 beeps).

- Playback bookmark (to the beginning of the first Book)
- Volume level (to medium)

USING THE  
MICROSD CARD

The HERALD can also play audio from a properly structured microSD card. See structuring rules under INTERNAL MEMORY.

6



With the player facing you insert the card into the microSD card reader on the side of the player with the brass contacts showing until it snaps in place.

Once a card is loaded, the player will beep 5 times quickly and begin playback from the microSD.

To remove a card, gently push it in. The card reader will release and push it out so you can remove it. If the player was

7

in playback mode from the card when removed, it will beep 5 times quickly and resume playback from the last position in onboard memory.

If the player is turned off while in microSD playback, it will resume from the bookmarked position on microSD.

You can view, format, and prepare a microSD card while loaded in the HERALD's microSD card reader when the player is connected to a Computer using an SLS<sup>1</sup> USB to micro-USB cable.

However, it is preferable (faster) to do the same with the card loaded in a microSD adapter connected to a Computer or hub.

<sup>1</sup>The SLS micro-USB cable is only available through MegaVoice. See sales representative for details.

8

EARPHONES,  
SPEAKERS AND  
VOLUME

The HERALD *does not* include an internal speaker!

Insert the plug of an earphone or speaker into the auxiliary 3.5mm stereo audio jack on the side of the player. Audio will be output to the connected device.

If you disconnect the device, the audio will cease but playback will continue. To prevent this, first click to pause playback.

A click on or will decrease/increase volume one level. A continuous press will adjust the loudness until the

Continued on back

9

minimum/maximum is reached.

Once minimum/maximum is reached, a double beep is played and will continue until the button is released.

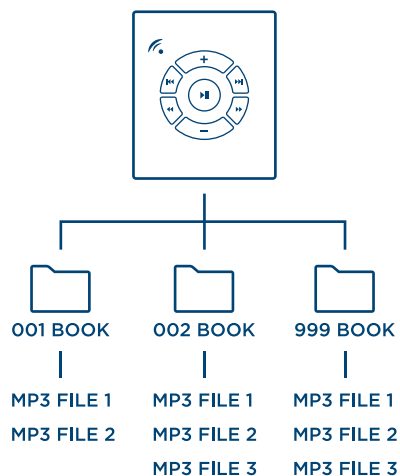
HERALD remembers the current volume and will remain set at this level even after the player is turned off and restarted.

<sup>1</sup>Volume adjustment works while in Playback and Pause Modes. When in Pause Mode, the player will beep at each level to indicate the current loudness.

## INTERNAL MEMORY

Access to the internal memory is only possible when using an SLS<sup>1</sup> micro-USB cable. Following are the folder and file rules:

- There must be exactly one folder level (Book)
- There may be from 1 to 999 folders
- Each folder may contain from 1 to 999 audio files
- Audio files must be MP3
- Folder and file names may be freeform text, but 3-digit prefixes are recommended
- If 3-digit prefixes are used, they must begin with 001
- Folders and files must sort in the desired playback order
- Max folder name length: 58
- Max file name length: 185



<sup>1</sup>The SLS micro-USB cable is only available through MegaVoice. See sales representative for details.

## BATTERY OPTIONS

HERALD is powered by two AA-sized batteries. They may be one of the following:

- Dry (disposable) batteries
- Rechargeable batteries<sup>1</sup>

The battery compartment is accessible from the left side of the player as it faces you. To slide the cover down, grab the tab at the top and pull down to expose the cavity and access the batteries. Note the battery placement diagram on the inside of the battery cavity.

When closing the cover, press down on the end of the battery closest to the edge.

<sup>1</sup>Requires external charger (not included)

## BATTERY CHECK

HERALD monitors the battery capacity. When the installed battery (any of the listed options) depletes to a certain level, the player will notify of low battery by causing the LED to blink intermittently.

Once the battery reaches the minimal level required for proper operation, HERALD will bookmark the current playback position and turn itself off.

10

11


12

13

14

## PROBLEMS WITH HERALD?

If your HERALD will not turn on, please try the following:

1. If using disposable batteries, make sure they are good. If not, replace them.
2. If the batteries are OK, force a reboot of the player by holding  for about 10 seconds. The player should restart automatically.
3. If step #2 failed, try removing the batteries and then reseating them in the battery compartment.
4. If none of the above succeeded, please contact your sales representative for support.

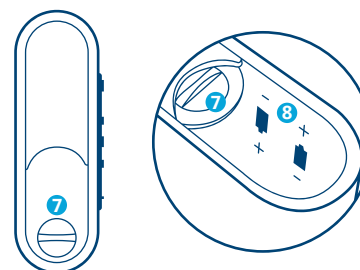
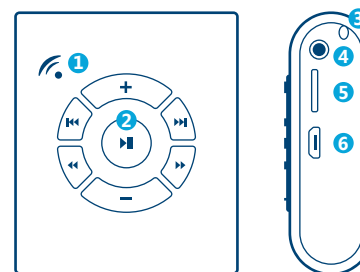
## WARNINGS



- Care must be taken to set the volume at the lowest level that can be heard comfortably. Prolonged exposure to loud sound can cause gradual hearing loss.
- DO NOT expose player or batteries to fire or extreme heat.
- Stop using player if you observe abnormal heat, odor, discoloration, leakage, or deformation, especially near the battery compartment. Refer to a qualified technician for service.
- If the batteries are removed from the player, handle them with care. Keep the exposed batteries out of reach of children. DO NOT burn, puncture,

disassemble, or modify batteries.

- If a battery leaks, dispose of it carefully in accordance with all local laws. Wash any skin or clothing exposed to battery liquid and avoid swallowing or contact with eyes. In the case of swallowing or contact with eyes, seek medical care immediately.



## OTHER SIDES

- 1 Status LED
- 2 Power/Pause/Play button
- 3 Lanyard hole
- 4 3.5mm stereo audio jack
- 5 MicroSD card reader
- 6 Micro-USB port
- 7 Tab on battery compartment door
- 8 Battery orientation icons

15

16

17

18

19