

ENVOY 2 E SERIES

Models: Elite, Echo, Equip, Ember

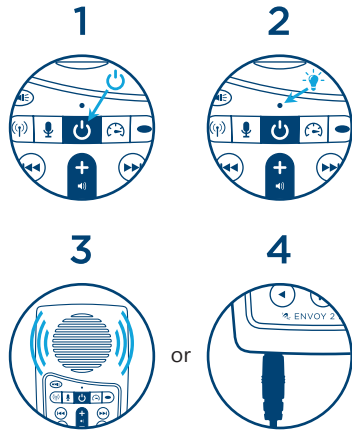


*Envoy 2.3 Elite Pictured

†Some features may not be included in your specific Envoy 2 E Series player.

EASY START

Press and hold until the LED turns on. The Envoy will start to play automatically.



1

TURNING THE PLAYER ON/OFF

Press in the middle of the keypad for 2 seconds to turn the player on (player will beep once). Press again for 2 seconds to turn the player off (it will beep twice).

¹The player will remember its last mode when turned off.

²While the player is on, a click on will perform a battery test. The LED will blink rapidly for 2 seconds indicating the remaining capacity (**Green**: 30-100%, **Yellow**: 10-29%, **Red**: 0-9%).

³When battery capacity drops to 0-9%, the LED will continuously blink red. Once the capacity drops to the minimum required for operation, Envoy will turn itself off.

2

SELECTING A CHANNEL

While playing audio from one Channel, a 2-second press on will navigate to the beginning of the next Channel (if present). When present in the last Channel of onboard memory, if a microSD card is loaded, the player will beep once and navigate to the card. See USING THE microSD CARD section for details.

¹The LED is **green** while in audio playback mode, whether onboard or microSD memory.

3

NAVIGATING DURING PLAYBACK

Each Channel is subdivided into one or more Sections, containing one or more Books, containing one or more Chapters.

Click to skip to the next Section within the current Channel.

Click or to jump backward or forward one Book. A 2-second press will skip 5 Books at a time. Press and hold¹ will continue until the button is released or the beginning/end of the Section is reached.

Click or to jump backward or forward one Chapter. A 2-second press will skip 5 Chapters at a time. Press and hold¹ will continue until the button is released or the beginning/end of the

4

Book is reached.

Click or to jump backward or forward 20 seconds² in the current file. Press and hold¹ will perform a fast rewind/fast forward until the button is released or the beginning/end of the file is reached.

¹During press and hold, the LED will blink accordingly.

²The actual time skipped may vary slightly.

SPEED CONTROL[†]

A 2-second press on will put the player in speed control mode allowing you to adjust the speed for playback. The setting affects both onboard, microSD and recording playback.

5

While in speed control mode, a click on or will adjust playback speed. The LED will alternate **red** and **green** as you change the speed. Press and hold will decrease/increase until the minimum/maximum speed is reached.

To exit speed control and save the modified speed, click again. Pressing any other button will exit without saving changes.

To reset the speed to normal, enter speed control mode, then press again for 2 seconds. The player will return to playback mode.

¹While in speed control mode, a beep is played every 10 seconds.

²Envoy will remember the modified speed even after it is turned off.

6

³Playback speed can only be altered for MP3, WAV and WMA audio files.

LED TORCH[†]

Use to control the LED Torch and its intensity. Each click will change the intensity as follows:

Low > Medium > High > OFF

Press and hold to turn on the Torch in high intensity. The Torch will stay on until the button is released.

¹The Torch may be used while other functions are active or player is off.

²The Torch will turn itself off automatically after 15 minutes.

7

EARPHONES, SPEAKERS AND VOLUME

Insert an earphone or speaker plug into the standard 3.5mm stereo audio jack on the bottom of the player. The internal speaker will turn off and audio will be output to the earphone.

Press or to decrease or increase volume. The Envoy will always remember the last volume setting.

¹Whenever an audio device is disconnected the player will enter Pause Mode.

²Some earphones with built-in controls may not work properly.

8

PAUSING/ BOOKMARKING

Envoy supports a total of 7 playback bookmarks. While in playback mode, click to enter Pause Mode (playback will suspend and the LED will blink intermittently).

A click on any of the buttons will resume playback from the bookmark previously associated with that button. If no bookmark is set, the player will beep 4 times.

A 2-second press on any of the buttons will set (or reset) a bookmark to the current audio position (player beeps once to confirm).

The default bookmark, which is used to resume playback when the player is

9

turned on, may be set with a 2-second press on **⏸**. This will work whether in Playback or Pause Mode and the player will beep 3 times to confirm.

To resume playback from Pause Mode, click **⏸**.

¹If Envoy is paused for more than 15 minutes, it will beep twice and turn itself off.

FM RADIO

Elite and Equip models only

From any other mode, a 2-second press on **📻** will put the player in radio mode (player will beep once).

¹While in Radio mode the LED is **yellow**.

10

Click **⏮** or **⏭** to decrease/increase the frequency by 0.1MHz. A 2-second press will scan for the previous/next FM station.

When scan reaches the beginning/end of the FM frequency range (87.0 – 108.0MHz) the player will beep.

An additional click will loop and continue the operation from the beginning/end respectively.

The **⏮** **⏪** **⏸** **⏩** **⏭** buttons may be programmed with default frequencies. A click on each will tune the radio to the setting for that button. A 2-second press will set (or reset) that button to the current frequency.

11

RECORDING

Elite and Equip models only

From any other mode, a 2-second press on **📻** will put the player in recording mode (player will beep once).

¹While in Record mode the LED is **red**.

²Recording files are written to microSD only! If a microSD is not present, the player will not permit access to the Recording feature and will beep 3 times.

Once in recording mode, a click on **📻** will begin recording with a single beep. An additional click will stop recording, beep once and save the recorded file.

While recording, a click on the **⏸** button will pause the recording. An additional click will resume recording.

12

All recording files are stored in a folder named "RECORD" in the root folder of the microSD card. They are named "RECXXX.wav" where "XXX" is the number assigned (beginning with 000).

A click on **📻** will begin playback of recorded files, beginning with the last recording. If the RECORD folder is empty, player will beep 3 times.

A click on **⏮** or **⏭** will skip to the previous/next recording file. A 2-second press will skip 5 files backwards or forwards. If there is no previous file, the player will beep once. If there is no next file, the player will beep twice.

A click on **⏪** or **⏩** will reverse/forward 20 seconds³ in the currently played recording file.

³The actual time skipped may vary

13

slightly.

Pressing **⏮** for 2 seconds will delete the current recording file and beep 4 times.

Pressing **⏭** for 2 seconds will reset the recording file counter to 000 and beep 4 times.

⁴If player function is changed while actively recording, the file will be saved before changing mode and some truncation may occur.

RESETTING PLAYER DEFAULTS

Resetting player defaults (listed below) is done by pausing the player and pressing **⏸** for 2 seconds (player will beep 3 times and turn off).

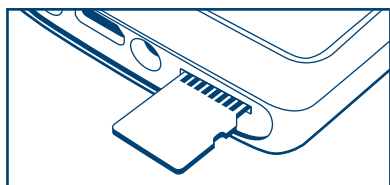
14

- Last used mode (to onboard playback)
- Default Playback bookmark (to beginning of onboard)
- Playback speed (to normal)
- Volume level (playback and radio to medium)
- Preset frequencies¹ (to embedded defaults)
- Radio bookmark¹ (to first preset)
- Recording counter¹ (to 000)

¹Elite and Echo only.

15

USING THE MICROSD CARD[†]



The player can also play audio from a properly structured microSD card. With the player facing you, insert the card into the microSD card reader on the bottom of the player with the brass contacts showing until it locks in place.

Once a card is loaded, press **📻** for 2 seconds repetitively until the player beeps once. Playback will now begin from the card.

16

To remove a card, gently push it in. The reader will unlock and push it out so you can remove it. If the player was in playback mode from the card when removed, it will beep once and revert to the onboard memory. If any other function was active, it will continue with no change.

Even though you can view, format and prepare a card while loaded in the Envoy's microSD card reader when the player is connected to a computer using a USB to micro-USB cable, it is recommended (faster) to use a microSD card adaptor connected to a computer.

¹While in playback from microSD, the LED will be **Green**.

17

CHARGING INSTRUCTIONS

With proper care, the Audio Player's Lithium-Ion battery should perform well for several years. When shipped, the battery is only partially charged. Please fully charge the player before the first use following one of the charging methods below:

🔌 For fastest charge, connect any standard "USB" charger (regulated 5VDC, minimum 300mA) to the micro-USB port on the bottom of the player for about 2 hours¹ or until the LED stops blinking.

🔌 Plug player into any standard computer USB port using a "USB to micro-USB" cable for about 3 hours¹ or until the LED stops blinking.

18

☀️ For solar charging[†], place the player with the solar panel facing bright sunlight for at least a full day¹. When solar charging, there is no indication of charge.

¹Actual charge time will vary according to the power source and current battery capacity.

²While charging, the LED will blink according to the charge level (**Green**: 30-100%, **Yellow**: 10-29%, **Red**: 0-9%).

BATTERY CARE

- Avoid completely depleting the battery as this will shorten its overall lifetime and takes much longer to fully charge afterwards.
- If sunlight is the only means available

19

- for charging, it is recommended to leave the player in direct light *often* to keep the battery at least partially charged.
- When using electric chargers, make sure of the following:
 - Voltage must be 5V DC! Lower voltage may not charge the unit properly while a higher voltage could damage it.
 - Maintain standard micro-USB connectivity/polarity – do NOT use an adaptor!
 - Maintain a stable power supply. An unstable power supply can cause surges that can damage the electronics.
- When not in use and whenever possible, keep the player in a cool

20

- place, which will also help to preserve battery life.
- Before stowing the player for prolonged periods, make sure the battery is at least partially charged.
 - If stored for *extended* periods, it is recommended to recharge the player at least every 6 months, in order to prevent the battery from losing its ability to recharge.
 - Should the battery become defective and unable to accept a charge, it is still possible to operate the player using a USB cable connected to a computer or an electric charger. If sunlight is the only source for power/charging, please replace the battery.

21

CHARGING/ COMMUNICATION MODES

When connecting the Envoy to a computer, it can be done in one of two modes: charging or communication.

¹*Changing to computer communication mode is essential to allow programming of the player.*

Connecting a player to a computer for programming purposes:


Connect the player to a computer using a micro-USB SLS³ cable (for onboard programming). The player will automatically enter computer communication mode.

22

²*While in computer communications mode, the player will also be charging.*

Connecting a player to a computer for charging purposes:

Connect the player to a computer using a micro-USB SLS³ cable, a Standard micro-USB Data cable or a Charge Only micro-USB cable.

- If connected via SLS³/Data cable, and you want to disconnect from computer communication mode and continue charging your player, click  on the front of the player. The player will return to the last mode used.
- For the computer to recognize the player again, the player will need to be unplugged from the computer and reconnected.

23


- Depending on the connection type, and the player's battery level, the LED will blink (indicating communication activity or charging level).
 - Physically unplugging the player from the computer will stop the charging process.
- ³SLS cables are available only from MegaVoice. See sales representative for details.

PROBLEMS WITH THE PLAYER?

If the unit will not turn on, please try the following:



1. Make sure the battery is charged according to CHARGING INSTRUCTIONS.

24

1. If the battery is OK, force a reboot of the player by holding  for about 10 seconds. The player should restart automatically.
2. If #2 fails, reset the player by gently inserting the end of a paper clip for a few seconds into the reset hole on the back of the player, just above the left-most screw holding the back panel. This is the same as disconnecting/reconnecting the battery. The player should restart automatically.
3. If none of the above succeeded, please contact your sales representative for support.

25

VOICING THE FIRMWARE[†]

From Pause Mode, a click on the  and  buttons together will voice the player's current firmware revision.

You may also adjust the volume of the message while in Pause Mode.

WARNINGS



- Care must be taken to set the volume at the lowest level that can be heard comfortably. Prolonged exposure to loud sound can cause gradual hearing loss.
- DO NOT expose player or battery to

26

fire or extreme heat.

- Stop using player if you observe abnormal heat, odor, discoloration, leakage or deformation, especially near battery. Refer to a qualified technician for service.
- If the battery is removed from the player, handle it with care. Keep the exposed battery out of reach of children. DO NOT burn, puncture, disassemble, or modify battery.
- If battery leaks, dispose of it carefully in accordance with all local laws. Wash any skin or clothing exposed to battery liquid and avoid swallowing or contact with eyes. In the case of swallowing or contact with eyes, seek medical care immediately.

27

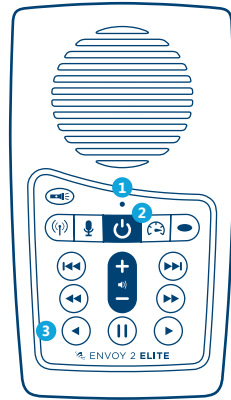
OTHER SIDES

- 1 Status LED
- 2 Power button
- 3 Microphone (Elite/Echo) (unseen)
- 4 Lanyard hole
- 5 Solar panel¹
- 6 Model code number²
- 7 Reset button
- 8 3.5mm stereo audio jack
- 9 Micro-USB port
- 10 Torch LED¹
- 11 MicroSD card reader

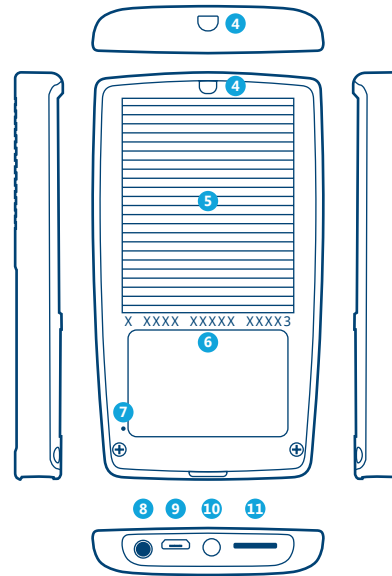
¹Features may not be present in your player.

²Envoy 2.3 example code shown. End of code indicates player version.

28



29



30

This device complies with part 15 of the FCC Rules. Operation is subject to the following two conditions:

(1) This device may not cause harmful interference, and (2) this device must accept any interference received, including interference that may cause undesired operation.

Changes or modifications not expressly approved by MegaVoice could void your authority to operate this device.



© 2024 MegaVoice Ltd. Made in China

Envoy 2 E Series User Manual - A4 - English - 2024.05.31-1.0.0

